

14.06.2016

Addendum to the Enquiry

This refers to the enquiry dated 10.06.2016 for the Interior Design and Set up of the proposed new premise of AMH SSC.

We are adding the BOQ Statement with the said enquiry for the convenience of applicants. The quotes may please be mentioned in the said BOQ format.

In view of the introduction of the BOQ Statement, the last date for submission of quote is hereby extended till **17th June 2016** at 03.30 p.m.

sd/-
(Dr. Roopak Vasishtha)
CEO



Quotations invited for Interior Designing and Set up of Corporate Office of AMH SSC

Greetings from the Apparel Made-ups & Home Furnishing Sector Skill Council.

Introduction of AMH SSC

This is to introduce this Sector Skill Council.

The Government of India has constituted Prime Minister's ambitious skill development programme under the leadership of the National Skill Development Corporation. The NSDC mandates skill formation to develop the workforce with enhanced skill through structured programme and assessment.

Owing to the presence of widespread training centers, participated by both public and private entities, determining the quality of training rendered at different training centers is crucial to the success of skill development programme and, thus, skill assessment is essential part of skill development.

AMH SSC has been launched jointly by the Ministry of Textiles, National Skill Development Corporation and the Apparel Export Promotion Council with primary mandate of enhancing and to build a capacity in skill development. One of the salient features of the AMH SSC is designing of training programmes, based on industry demands of different segments and to ensure that all successful trainees are certified through accredited agency.

AMH SSC has been authorized by NSDC for evolving assessing proficiencies of skills of trainees for the Apparel, Made-ups and Home furnishing sectors for their respective subject areas. The assessment is defined as a structured process in which evidence of performance is gathered and evaluated against approved QPs/NOSs, as approved by the NSDC.

Assessment is the process of evidence collection of the competence level of a person through range of method-tests, observations, interviews, assignments and professional discussions. It is further mandated that competency assessment of the candidate is being done by independent Assessing Bodies (AB), which are not involved in training delivery, to ensure an impartial assessment.

AMH SSC has developed 45 National Occupational Standards for the Apparel, Made-Ups and Home Furnishing industry;

The Apparel, Made-ups & Home Furnishing Sector Skill Council is now fully operational and is equipped with more than 240 Training Partners, 20 Assessment Bodies and 5 Master Trainers.

Sealed competitive quotations, under two bid system, are invited from reputed interior decorators/contractors, having proven track record in the field, for undertaking the work of furnishing and interior decoration of AMH SSC Corporate Office at Sector – 6, R. K. Puram, New Delhi. The quotations should reach CEO, AMH SSC on or before 15:00 Hrs on 14.06.2015, which will be opened on the same day at 15:30 Hrs in the presence of bidders present, if any. CEO, AMH SSC, reserves the right to accept or reject any or all the quotations without assigning any reason, whatsoever. Design & Layout, Enquiry Document, and further details are available on AMH SSC website under Enquiries Section.

Sd/-
Dr. Roopak Vasishtha
CEO
AMH SSC

**Apparel Made-ups & Home Furnishing
Sector Skill Council**

ENQUIRY DOCUMENT

ENQUIRY NO. AMHSSC/ADMN/CORP/2016/06

Dated:.09.06.2016

Setting Up and Interior Decoration of Corporate Office at New Delhi

AMH SSC requires the services of a professional agency with proven credentials in the field of Fabrication, Construction & Interior Decoration for the Corporate Office at Indian Buildings Congress, First Floor, Sector – 6, R. K. Puram, New Delhi, as per the scope of work given below.

A. SCOPE OF WORK

Setting up and Interior Decoration of the Office having a floor area of 1800 sq. ft. approximately.

Draft layout attached with the Enquiry document.

B. GUIDELINES FOR SUBMISSION OF ENQUIRYS

The technical and financial bids for the setting up & interior decoration of AMH SSC, Corporate Office, New Delhi should be **submitted separately** and should include the following :

Cover – 1 : Superscribed with "**Technical bid for setting up & interior decoration of AMH SSC, Corporate Office, New Delhi**" and should accompany the following documents:

- i. Profile of the Agency / Company.
- ii. Details of Technical Manpower and Staff available in-house.
- iii. Track record - details of involvement in similar projects.
- iv. Financial Statements signed by a statutory auditor, indicating turnover of the company, balance sheet and Profit & Loss Account for last three years.

Cover – 2 : Superscribed with "**Financial bid for setting up & interior decoration of AMH SSC, Corporate Office, New Delhi**" and should accompany the following documents :

1. (i) A Financial Bid, clearly indicating the cost, inclusive of taxes, if any, for carrying out the work (Itemwise cost/Headwise expenditure, in accordance with the drawing attached, should be indicated).

(ii) The financial quote should be exactly in accordance with the drawing attached with this Enquiry document.

2. **Terms of Payment** : Payment will be made to the bidder as per following schedule:

- a) Advance shall be paid, on mutually agreed percentage of the value of the contract, on award of the work order.
- b) Balance payment will be effected in instalments based on the progress of the work.
- c) Taxes as applicable will be deducted at source

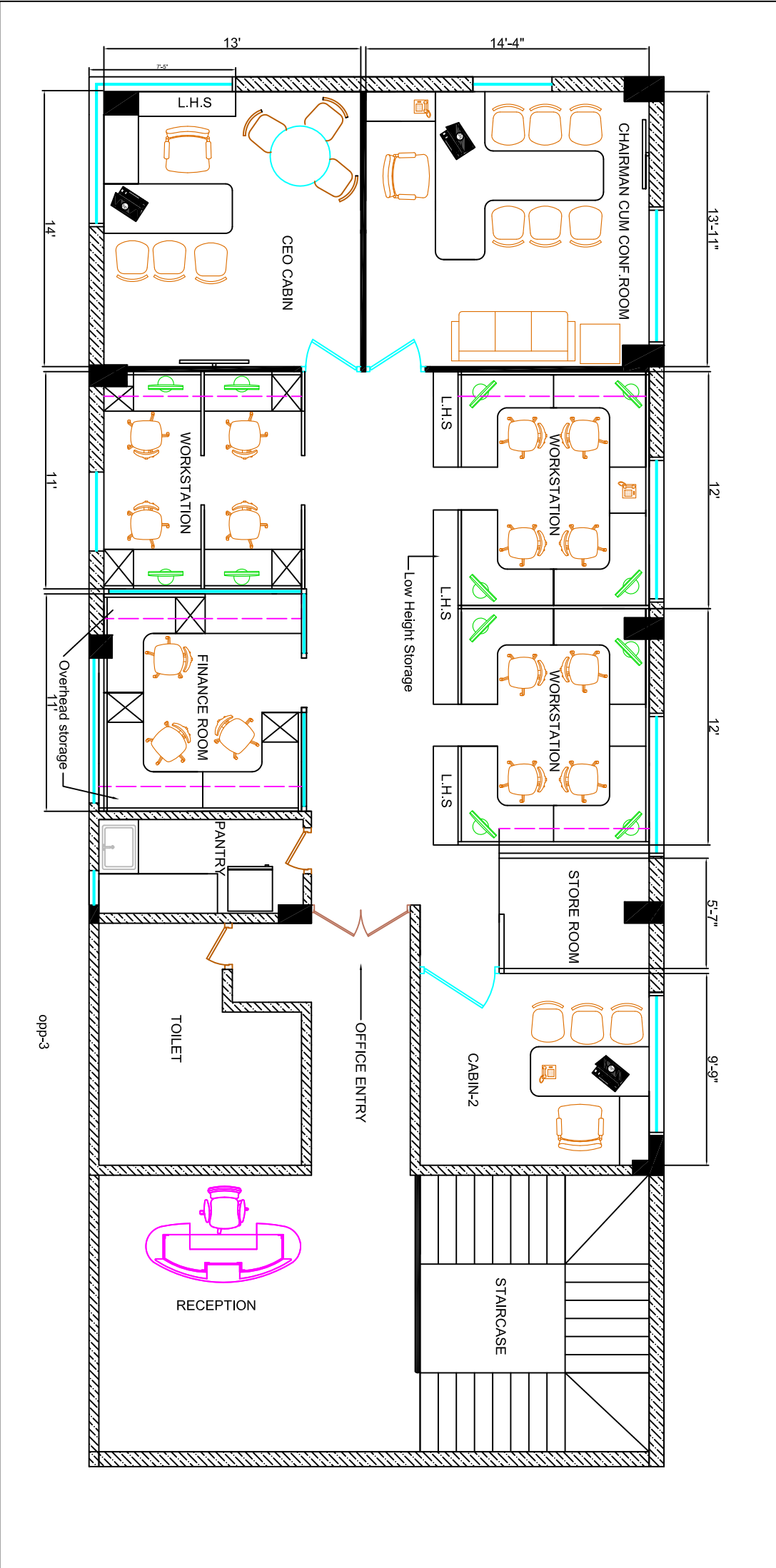
The outer sealed cover containing the above 2 sealed covers to be superscribed with "**Bids setting up & interior decoration of AMH SSC, Corporate Office, New Delhi**". The inner and outer covers should have the Full Name, Postal Address, Fax, E-mail and Telephone number of the Bidder on the bottom left corner.

The Bids as per details given above should be submitted to the CEO, AMH SSC, 4th Floor, Apparel House, Sector -44, Gurgaon - 122003 on or before 15:00 hrs. on 14.06.2015. Technical and Financial bids received by Email and bids received beyond the appointed time will not be accepted.

C. ADDITIONAL INFORMATION

- i. The Corporate Office in the full-fledged interior decorated form shall be handed over to the CEO of AMHSSC within 30 days after award of the work;
- ii. AMH SSC reserves the right to reject or accept any offer without assigning any reasons whatsoever.
- iii. Selection of Agency(ies) will be based on the acceptance of the technical competency of the agencies as revealed from the technical bids and lowest quote received for the work.
- iv. Conditional bids will be rejected outright. The quoted price should be all inclusive (including taxes, levies etc.). The amount quoted should be indicated both in words and figures. Corrections/overwriting have to be avoided. All pages should be signed by the authorized signatory.
- v. **Opening of the Bids** : The Enquiries will be opened at **15:30 hrs. on 14.06.2015**, at AMHSSC, Gurgaon Office, in the presence of bidders or duly authorized representatives of the bidders, if any.
- vi. **Liquidated Damages** : In the event of bidder's failure to complete the work within the specified time, AMH SSC may, without prejudice to its any other rights hereunder, recover from the bidder, as Liquidated Damages, the sum of 5 % of the contract price.
- vii. **Termination by default** : AMH SSC reserves the right to terminate the contract of any agency in case of unsatisfactory services.
- viii. **Jurisdiction** : The contract shall be interpreted and governed by the Laws of India. In the event of any dispute/ litigation between the agency with whom the work is entrusted and the AMH SSC in respect of any of the conditions/provisions of this document or the agreement to be executed while awarding the work, the decision of CEO, AMH SSC, shall be final and binding on both the parties and any litigation arising out of this document/agreement shall be subject to the jurisdiction of Delhi Courts only.

NB: The bidders are advised to visit the site before offering their rates. The dimensions/measurements given may vary.



From :

M/s Apparal Made-ups & Home Furnishing Sector Skill Council

Indian Congress, First Floor, Sector-6, R. K Puram, New Delhi-110022.

Sub : BOQ for Setting up & Interior Decoration of AMH SSC, Corporate Office , New Delhi

S.no	Item Description	Make/ Brand	Unit.	Qty.	Rate	Amount
A	GYP SUM & WOOD WORK					
1	Dismantling of exgesting Furniture & Fixture	NA	L/s	1		
2	P & F of Gypsum Board Partition Using 50mm vertical MS Stud with both side 12mm Thk. Gypsum Board of approved brand as per Design.	Gypsum India	sqft	665		
3	P & F of Window & Door Paneling using 12mm thk. Commercial Ply finish with 1mm thk. Laminate of approved shade.	ISI Make	rft	346		
4	P & F of Wooden wall Panning using 12mm thk. Commercial Ply finish with 1mm thk. Laminate of approved shade.	ISI Make	sqft	300		
5	P & F of 1200ht. Wooden partition with pinup board for workstation using 35x35mm thk. Wooden frame covered with 6mm thk ply both side & finish with approved shade of laminate.	ISI Make	sqft	580		
6	P & F of 12mm thk. Toughened Glass with concealed fixing arrangement in floor & Ceiling as per Design. (for Partition)	Modi, AIS/ Saint Gobin	Sqft			
7	P & F of 12mm thk. Toughened glass Door with Proper hole & Cutout with concealed fixing arrangement in floor & Ceiling as per Design and hardware of approved brands. Size up to 2100x900mm.	Modi/AIS	Each	5		
8	P & F of Gypsum Board False Ceiling using MS Section & 12mm thk. Gypsum Board with Taping and compounding.	Gypsum India	sqft	1200		
9	P & F of 2'x2' Mineral Fiber Suspended Grid False Ceiling System.	Armstrong/Equ.	sqft	800		
	P & Appling two coat of Birla wall Putti & Three coat of Plastic paint on Wall & Partition.	Birla/Asian	sqft	4500		
B	MODULAR FURNITURE (DESKING SYSTEM)					
1	P & F of 400mm deep Wooden Cupboard using 18mm thk. Pre Laminated Board. of approved shade.	NA	sqft	280		
2	P & F of workstation size 5'x5' 18mm thk. Pre Laminated Baord. of approved shade. including keyboard.	NA	Each	11		
3	P & F of workstation size 5'x2' 18mm thk. Pre Laminated Baord. of approved shade. including keyboard.	NA	Each	5		
4	P & F of Three Drawer Storage Unit using 18mm thk. Pre Laminated Baord. of approved shade.	NA	Each	16		
5	P & F of "T" type Chairman Room Table with side table over the wooden understructure with Elect. Popup box or using 18mm thk. Pre Laminated Board. of approved shade.	NA	Each	1		
6	P & F of CEO Room Table with side table & Back stroge Unit over the wooden understructure using 18mm thk. Pre Laminated Baord. of approved shade.	NA	Each	1		
7	P & F of Cabin Table with side table & Back stroge Unit over over the wooden understructure using 18mm thk. Pre Laminated Baord. of approved shade.	NA	Each	1		
C.	FIRE WORK					
1	P & F of Micro Processor Based Fire Detection & Alarm Panel Complete with inbuilt power supply, battery charger with SMF battries for minimum 12 hours backup.	Honeywell/ Sysyem Sensor	Rate Only	1		
2	Optical Type Smoke Detrctor	Honeywell/ Sysyem Sensor	Rate Only	12		
3	Heat Detector	Honeywell/ Sysyem Sensor	Rate Only	1		
4	Manual Break Glass Unit	Agni	Rate Only	2		
5	Fire Hooter	Agni	Rate Only	2		
6	Response Indicator	Agni	Rate Only	6		
D	ELECT. WORK					
1	Light Point with Switch	Anchor/ Northwest	Each	64		
2	Fan Point with Regulator	Anchor/ Northwest	Each	12		
3	P & F of 10Amp. Switch & Socket with 2 switch & 2 Socket on UPS Power	Anchor/ Northwest	Each	32		

4	P & F of 10Amp. Switch & Socket with 1 switch & 1 Socket on RAW Power	Anchor/ Northwest	Each	32		
5	P & F of 20Amp. Switch & Socket with 1 switch & 1 Socket on RAW Power	Anchor/ Northwest	Each	8		
6	P & F of 32Amp. Switch & Socket with 1 MCB switch & 1 Socket on RAW Power	Anchor/ Northwest	Each	12		
7	P & F of 12way Distribution Board with MCB (For Light & Power) with MCB	Havells/ Anchor	Each	1		
8	P & F of 12way Distribution Board with MCB (For UPS) with MCB	Havells/ Anchor	Each	1		
9	10x2 & 2.5x1 sqmm Main Wire	Havells/ Anchor	rmt.	150		
10	2.5x2 & 1.5x1 sqmm Wire	Havells/ Anchor	rmt.	560		
11	25mm PVC Conduite	AKG/ISI	mtr.	200		
12	P & Laying HDMI Cable 10 mtr.	ISI	Each	3		
13	P & Laying of co-axail TV Cable RG-6 for Tata Sky	ISI	mtr	120		
E	LIGHTING WORK					
1	P & F of 2'x2' 36w LED Light Fixture	Havells/Philips	Rate Only	16		
2	P & F of 150mm 15w LED Light Fixture	Havells/Philips	Rate Only	32		
3	P & F of 1200x300mm LED Light Fixture Hanging System	Havells/Philips	Rate Only	opt.		
F	SOFA & CHAIR					
1	Supply of Workstation Chair Make..... Model No..... Basic Rate @ 5000/-	Geeken/ fatherlite	Each	15		
2	S.Exe Cabin Chair Make..... Model No..... Basic Rate @ 15000/-	Geeken/ fatherlite	Each	3		
3	S.Exe Cabin Visitor Chair Make..... Model No..... Basic Rate @ 14000/-	Geeken/ fatherlite	Each	12		
4	Supply of three Str. Sofa Set Make..... Model No..... Basic Rate @ 18000/-	Geeken/ fatherlite	Each	2		
5	Supply of Sofa Side Table 2'x2' Make..... Model No..... Basic Rate @ 4500/-	Geeken/ fatherlite	Each	2		
6	Supply & Fixing of 3'dia Round Table With Wooden Base & 10mm thk. Glass Top Make..... Model No..... Basic Rate @ 18000/-	NA	Each	1		
G	FLOORING					
1	P & F of Carpet Flooring Basic Rate @ 120/- Per Sqft	NA	sqft	1700		
2	P & F of Wooden Flooring with Scarting Basic rate @ 90/- Per sqft	NA	sqft	opt.		
H	MICSS. WORK					
1	P & F of 30mm wide Wooden Blinds of approved shade & Design. (For Cabin)	NL/HD	sqft	opt.		
2	P & F of Roller Blinds of approved shade & Design.	NL/HD	sqft	590		
3	P & F of Vertical Bilinds of approved shade & Design.	NL/HD	sqft	opt.		
4	P & F of Frosted Designer Glass Film as per Design by computerised plotter cutting process.	Gurware/3M	sqft	opt.		
5	P & Fabrication of 5'x5' Covered Shed for UPS & Invertor Batteries over the Roof Top.	NA	L/S	1		
	TOTAL AMOUNT					
	Taxes :					
	VAT @12.5% on 80% of Total Amount					
	Service Tax @ 10.50% on Total Amount					
	TOTAL AMOUNT WITH TAX					